

KSP Small Format Interchangeable (I/C) Core

KSP

KILLEEN SECURITY PRODUCTS

Small Format Interchangeable (I/C) Cores

- For Best, Arrow, Falcon and other manufacturer products that use small format I/C Cores
- Apart from stocked keyways, other keyways available are B, C, E, F, G, H, K, L, M, Q, 1C, & 1D.

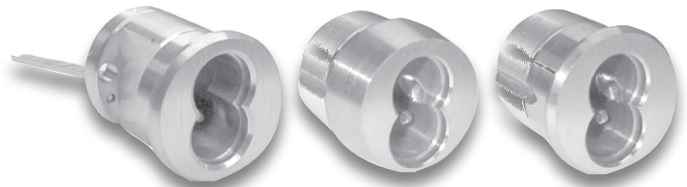


206

207

Mfg #	Keyway	Keying	Pins	EZ #
206A26D	A	Uncombined	6	007673
206A26D KA/2	A	KA/2	6	035855
206AC26D KD	A	KD	6	007672
206D26D	D	Uncombined	6	007679
206J26D	J	Uncombined	6	007689
207J26D	J	Uncombined	7	007709
Control Key for A Keyed Cores				
CON KEY856947				076524

Rim & Mortise Cylinder Shells



308

316

406
407

316 Features

- Tapered cylinder Head (316)
- Set screw from inside cylinder can be used to secure cylinder to lock case.

Mfg #	Pins	Cam	Length	EZ #
Rim Cylinder				
308 26D	6			007720
Mortise Cylinder with Cam				
316 26D	6	Adams Rite	1-3/8"	007726
Mortise Cylinders less Cams - Use 700 Series Cams				
406 26D [KSP]	6	Optional	1-1/4"	073500
407 26D [KSP]	7	Optional	1-3/8"	073501

Tools & Caps



606



610



CAPS

Mfg #	Description	EZ #
606	Capping Block & Punch	035856
610	Ejector Punch	035857
CAPS	Cylinder Caps (Package/500)	035854

Cams for 400 Series Mortise Cylinders



700

701

702

702L

702S

Mfg #	Cams	EZ #
700 [KSP]	Standard	073503
701 [KSP]	Adams Rite	073504
702	Cloverleaf	073505
702L	Schlage	073506
702S	Sargent	073558